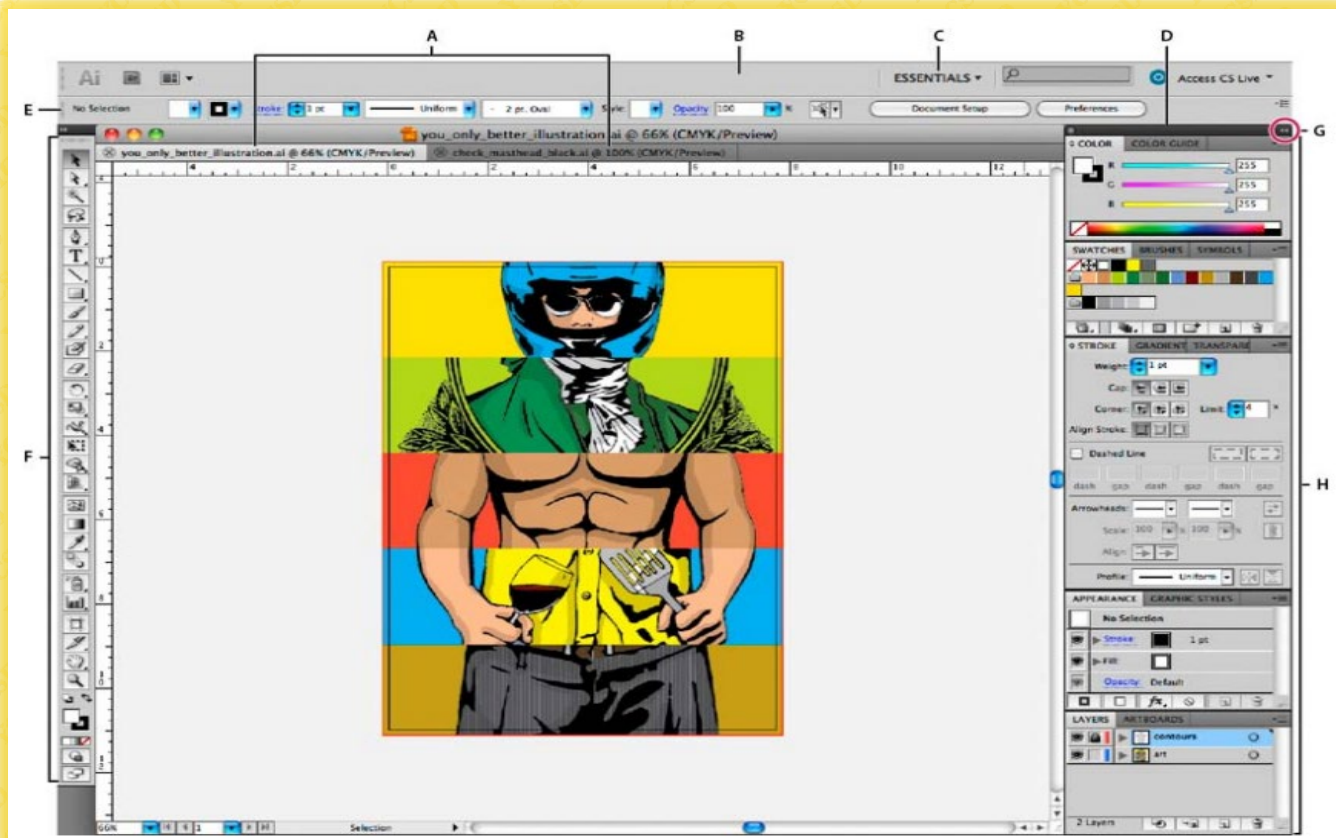


# PHOTOSHOP



Workspace and Workflow

Photoshop CS6 workspace



A. Tabbed Document windows B. Application bar C. Workspace switcher D. Panel title bar E. Control panel F. Tools panel G. Collapse to Icons button H. Four panel groups in vertical dock

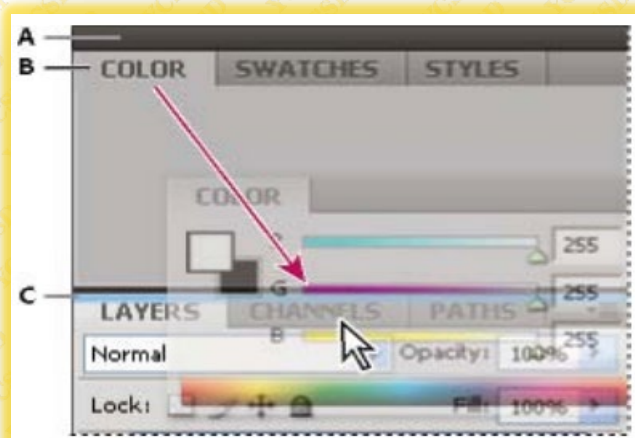
Dock and undock panels

A dock is a collection of panels or panel groups displayed together, generally in a vertical orientation. You dock and undock panels by moving them into and out of a dock.

- ✓ To dock a panel, drag it by its tab into the dock, at the top, bottom, or in between other panels.
- ✓ To dock a panel group, drag it by its title bar (the solid empty bar above the tabs) into the dock.
- ✓ To remove a panel or panel group, drag it out of the dock by its tab or title bar. You can drag it into another dock or make it free-floating.

Move panels

- ✓ To move a panel, drag it by its tab.
- ✓ To move a panel group, drag the title bar.
  - A. Title bar
  - B. Tab
  - C. Drop zone



## Add and remove panels

- ✓ To remove a panel, right-click (Windows) or Control-click (Mac) its tab and then select Close, or deselect it from the Window menu.
- ✓ To add a panel, select it from the Window menu and dock it wherever you want.

## Resize panels

- ✓ To minimize or maximize a panel, panel group, or stack of panels, double-click a tab. You can also double-click the tab area (the empty space next to the tabs).
- ✓ To resize a panel, drag any side of the panel. Some panels, such as the Color panel in Photoshop, cannot be resized by dragging.

## Delete a custom workspace

- ✓ Select Manage Workspaces from the workspace switcher in the Application bar, select the workspace, and then click Delete.
- ✓ Choose Window > Workspace > Delete Workspace, select the workspace, and then click Delete.

## Tools

### Selection tools



**The marquee tools** make rectangular, elliptical, single row, and single column selections.



**The Move tool** moves selections, layers, and guides.



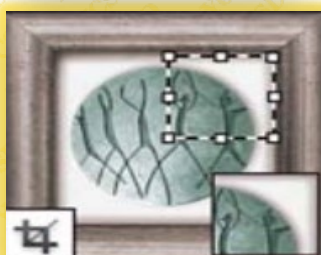
**The lasso tools** make freehand, polygonal (straight edged), and magnetic (snap to) selections



**The Quick Selection tool** lets you quickly "paint" a selection. using an adjustable round brush tip



**The Magic Wand tool** selects similarly colored areas



**The Crop tool** trims images.



**The Slice tool** creates slices.



**The Slice Select tool** selects slices.

**Retouching tools**



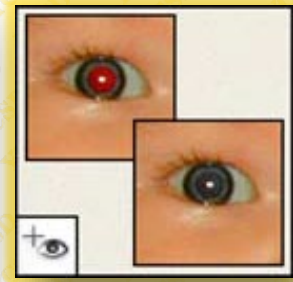
**The Spot Healing Brush tool** removes blemishes and objects.



**The Healing Brush tool** paints with a sample or pattern to repair imperfections in an image.



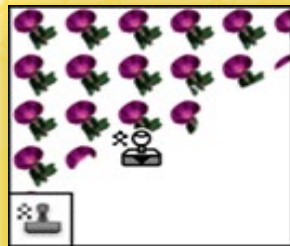
**The Patch tool** repairs imperfections in a selected area of an image using a sample or pattern.



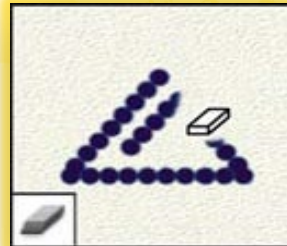
**The Red Eye tool** removes the red reflection caused by a flash.



**The Clone Stamp tool** paints with a sample of an image.



**The Pattern Stamp tool** paints with part of an image as a pattern.



**The Eraser tool** erases pixels and restores parts of an image to a previously saved state.



**The Background Eraser tool** erases areas to transparency by dragging.



**The Magic Eraser tool** erases solid-colored areas to transparency with a single click.



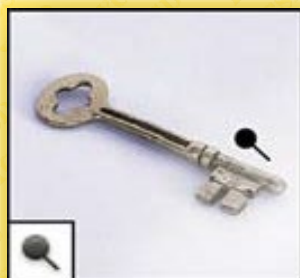
**The Blur tool** blurs hard edges in an image.



**The Sharpen tool** sharpens soft edges in an image.



**The Smudge tool** smudges data in an image.



**The Dodge tool** lightens areas in an image.

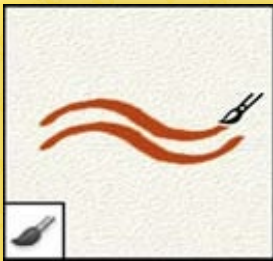


**The Burn tool** darkens areas in an image.



**The Sponge tool** changes the color saturation of an area.

**Painting tools**



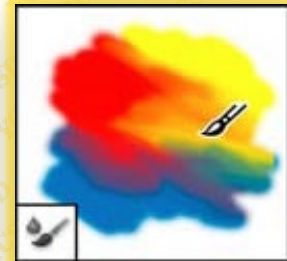
**The Brush tool** paints brush strokes.



**The Pencil tool** paints hard-edged strokes.



**The Color Replacement tool** replaces a selected color with a new color.



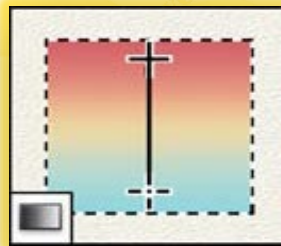
**The Mixer Brush tool** Simulates realistic painting techniques such as blending canvas colors and varying paint wetness.



**The History Brush tool** paints a copy of the selected state or snapshot into the current image window.



**The Art History brush tool** paints with stylized strokes that simulate the look of different paint styles, using a selected state or snapshot.



**The gradient tools** create straight-line, radial, angle, reflected, and diamond blends between colors.

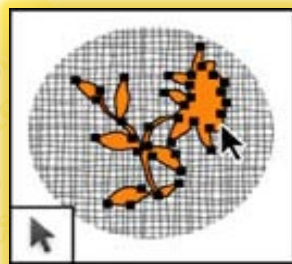


**The Paint Bucket tool** fills similarly colored areas with the foreground color.

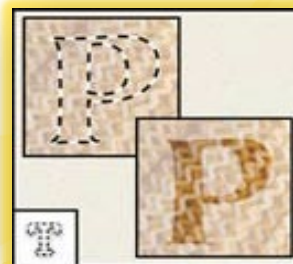
**Drawing and type tools**



**The type tools** create type on an image.



**The path selection tools** make shape or segment selections showing anchor points, direction lines, and direction points.



**The type mask tools** create a selection in the shape of type.



**The pen tools** let you draw smooth-edged paths.



**The shape tools and Line tool** draw shapes and lines in a normal layer or a shape layer.



**The Custom Shape tool** makes customized shapes selected from a custom shape list.

**Navigation, notes, and measuring tools**



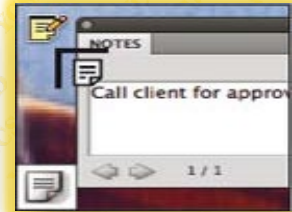
**The Hand tool** moves an image within its window.



**The Rotate View tool** non-destructively rotates the canvas.



**The Zoom tool** magnifies and reduces the view of an image.



**The Note tool** makes notes that can be attached to an image.



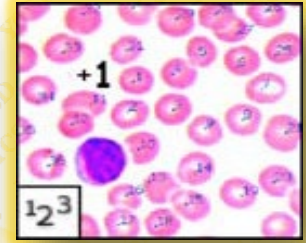
**The Eyedropper tool** samples colors in an image.



**The Color Sampler tool** displays color values for up to four areas.



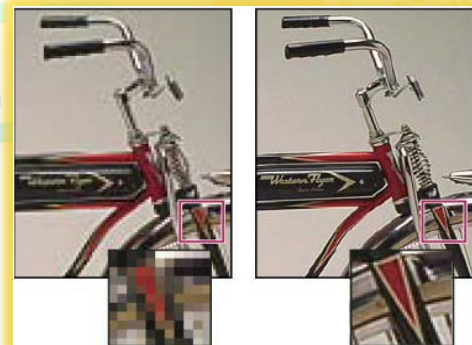
**The Ruler tool** measures distances, locations, and angles.



**The Count tool** counts objects in an image.

**Pixel Dimensions and Printed Image Resolution**

Pixel dimensions measure the total number of pixels along an image's width and height. Resolution is the fineness of detail in a bitmap image and is measured in pixels per inch (ppi). The more pixels per inch, the greater the resolution. Generally, an image with a higher resolution produces a better printed image quality.

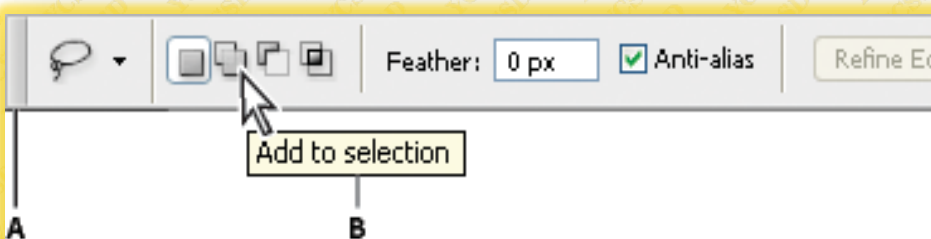


Same image at 72-ppi and 300-ppi; inset zoom 200%

**Color modes**

- RGB Color mode
- CMYK Color mode
- Lab Color mode
- Grayscale mode
- Bitmap mode
- Duotone mode
- Indexed Color mode
- Multichannel mode

**Options Bar**



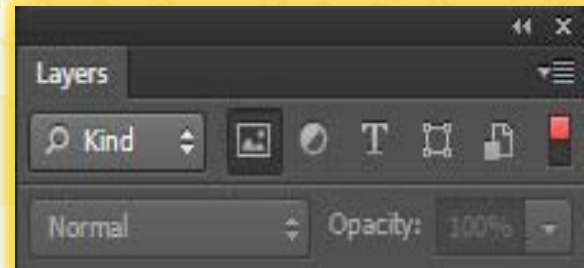
**Tool Presets**

- A. Click the Tool Preset picker in the options bar to show the Tool Preset pop-up panel.
- B. Select a preset to change the tool's options to the preset, which applies each time you select the tool until you choose Reset Tool from the panel menu.
- C. Deselect to show all tool presets; select to show presets for only the tool selected in the toolbox.

**Filter layers**

Filter layers options in the Layers panel

- A. Gripper bar
- B. Tool tip

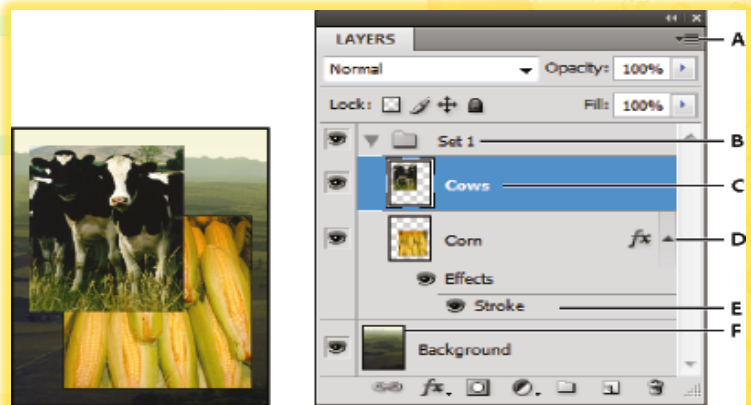


**History panel**

- A. Sets the source for the history brush
- B. Thumbnail of a snapshot
- C. History state
- D. History state slider

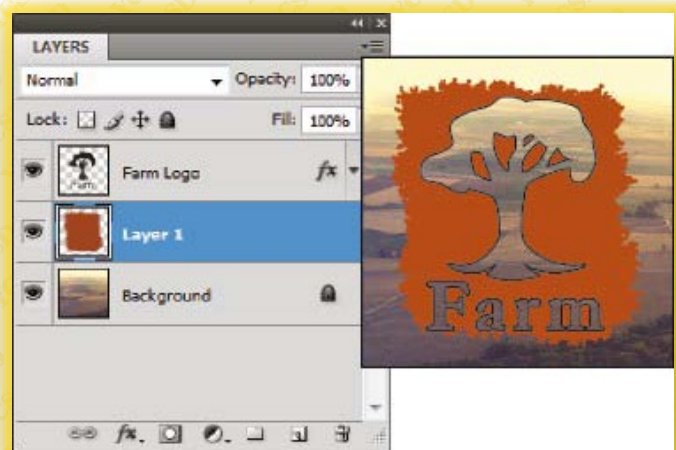
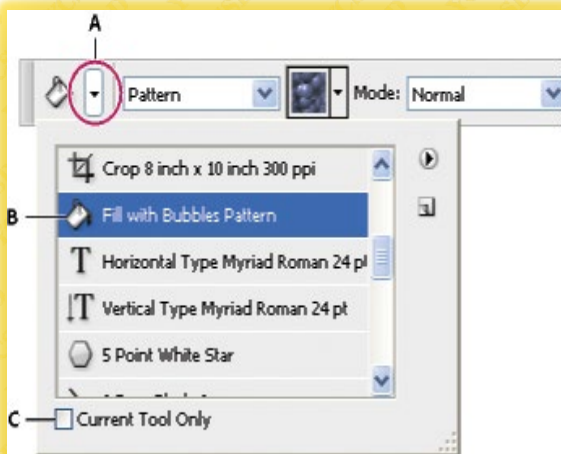
**Layers panel**

- A. Layers panel menu
- B. Layer Group
- C. Layer
- D. Expand/Collapse Layer effects
- E. Layer effect
- F. Layer thumbnail



**Knockout**

- ✓ Farm logo with shallow knockout to Background layer



# Welcome In YCSD

For Access Entire Study Materials

**For Student**

Please Ensure Your Enrollment Verification

## ENROLLMENT VERIFICATION

Student Registration No.

Date Of Birth

Check Now

**For Franchise**

Please Login Via Franchise Id & Password

## CENTER LOGIN

User Name

Password

Login

Thank You for Visiting Us

YCSD



 Youth Computer Skill Development

 YCSD

 [www.ycsd.in](http://www.ycsd.in)

 [info@ycsd.in](mailto:info@ycsd.in)



[www.ycsd.in](http://www.ycsd.in)